

PRODUCT DATASHEET

DOWNLIGHTS | PENDANT & SURFACE MOUNTED

Downlights | Pendant & Surface mounted spotlight | 7w | Round shape

Code# CR05009-7



Areas of Application

- Club
- Cinema
- Gallery
- Hotel
- Shops
- Living room, restaurant, residential interiors

Product Features

- High luminous efficacy, high CRI
- Energy savings of up to 90% compared to halogen lamp spotlights
- CCT optional and dimmable
- Die-cast aluminum housing, ensure excellent heat dissipation
- Uniform light output and good consistency
- Anti-glare, without flicker
- Easy and quick installation
- 350° rotary adjustment, 90° vertical adjustment

Complete Product Data

Code#	CR05009-7
Wattage	7w
Installation Type	Pendant/ Surface
Dimension	φ70mm*100mm
Cutout	/
IP Rating	IP20
Luminous Flux	525lm
Beam Angle	10°, 20°, 30°
Working Temperature	-25℃ ~55℃
Certificates	/
Warranty	3 Years
Packing Size	/

Driver Data

Driver Brand	Tridonic, Osram, Philips, Lifud, Euchips, Eaglerise, etc.
Input Voltage	100-250VAC 50/60hz
Output Voltage	30-42Vdc
Output Current	180mA
Power Factor	>0.5 as standard; >0.9 optional
Efficiently	87% @230v
IP Rating	IP20
Dimmable	Non-Dimmable/Triac/0-10v/Dali Optional
Free Flicker	Yes
Certificates	CE, CB, CCC, ENEC
Warranty	3/5 Years

Material&Housing Data

Housing Color	White/ Black
Reflector Color	White/ Black
Housing Material	Aluminum

Photometric Data

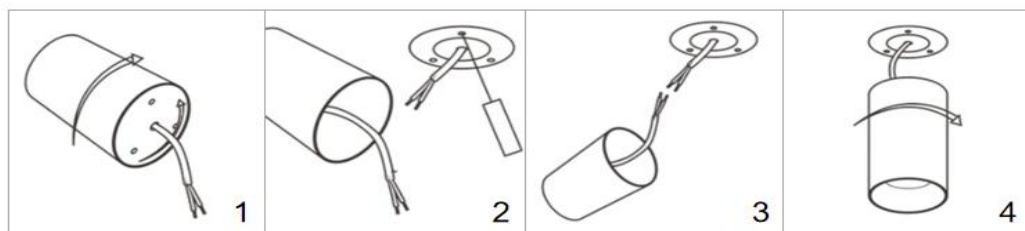
LED chip brand	Cree/ Osram /Bridgelux/ Epistar etc.
Chip Type	COB
Color Temperature	2700K, 3000K, 4000K, 5000K, 6000K
CRI	>80
Life time	>50000Hrs
Lumens efficacy	100-120lm/w

Dimensions&Installation



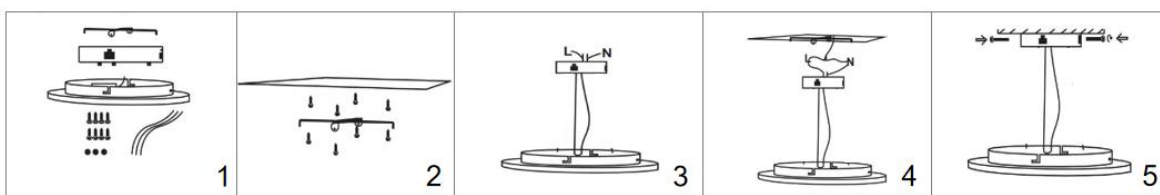
PLEASE FIND A QUALIFIED ELECTRICIAN FOR INSTALLATION. Please read the instructions before you install and use the downlight.

Method A: Surface Mounted



1. Make sure the power is turned off in which you are installing the products.
2. Rotate the lamp body clockwise, rotate the base to separate from the lamp body anticlockwise. (Fig 1)
3. Fix the base with the screwdriver. (Fig 2)
4. Connect the input terminal to the main power supply. (Fig 3)
5. Rotate the housing base with the pedestal anticlockwise for fixation. (Fig 4)
6. Restore power at the source and the installation is complete.

Method B: Pendant Mounted



1. Make sure the power is turned off in which you are installing the products.
2. Prepare the accessories for suspended installation. (Fig 1)
3. Install the bracket on the ceiling. (Fig 2)
4. Install a suspension wire on the lamp body. (Fig 3)
5. Connect the electronic cable L & N from indoor with the terminal on the lamps and connect the suspension wire to the bracket (while there is grounding wire, same methods). (Fig 4)
6. Fix the entire base with screws, restore power at the source and the installation is complete. (Fig 5)